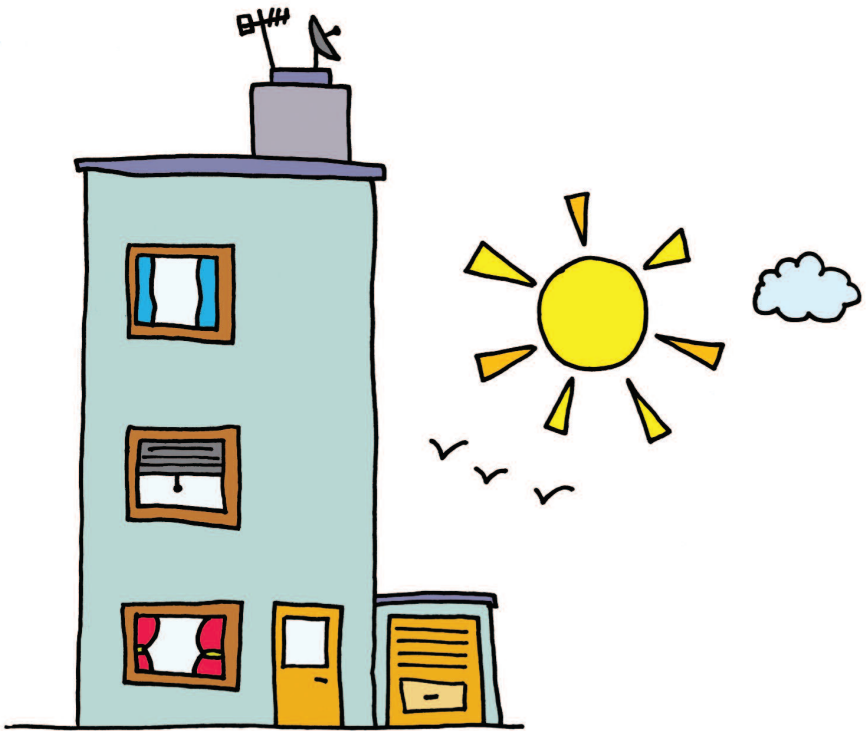


# Co-operative Row Rushden



January 2010

## How did the scheme begin?

The scheme began as a joint venture between Longhurst Housing Association and East Northamptonshire Housing in 1999. The council provided three empty adjoining terraced houses and a social housing grant to part fund the project. Longhurst secured the remainder of the funding through private finance. The scheme is now managed locally by Spire Homes, a member of the Longhurst Group. Spire Homes are locally based and provide housing throughout the Northamptonshire and Rutland area.

## What does the project provide?

Converted from three terraced houses, the scheme provides a home for up to eight people to live independently with some support from staff. Co-Operative Row is an attractive and modern scheme with:

- A variety of accommodation
- Communal dining and living areas
- Support and guidance
- Life and social skills tailored to meet individual needs
- A friendly, family atmosphere
- A safe and secure environment
- Out of hours emergency support
- Support plans that are client focuses with specific goals.

## Who is the scheme for?

People aged between 18 to 60 years, who have specific support needs that can be met by the staff or by external agencies. Prospective clients will be assessed on their:

- Ability to live safely
- Communication and co-operative living skills
- Social acceptability
- Support needs.

Spire Homes will complete a support plan for all clients that is individual to their needs and is focussed on setting objectives. These will be reviewed on a regular basis.

## How can prospective clients apply?

There is an application and risk assessment form that needs to be completed to be considered for this scheme. These are available from Spire Homes' main office in Rushden. Dependant on vacancies, prospective clients are normally given a decision on whether they have been accepted within 2 working days.

## Who manages the scheme?

Spire Homes own the scheme and employs a support worker to provide day to day management. The support worker works very closely with external agencies in all aspects of the scheme and client needs.

This leaflet is available in various formats, i.e. different languages, braille, audio formats etc. Please contact us for further information.



=



**Lãngüagê Liñè**

### **Rushden Office**

1 Crown Court  
Crown Way  
Rushden  
Northamptonshire  
NN10 6BS

t: 0845 603 5399

text: 447797 800062

### **Rutland Office**

Pinewood  
1 Cold Overton Road  
Oakham  
Rutland  
LE15 6NT

t: 01572 755465

text: 447797 800062

email: [spirehomes@longhurst-group.org.uk](mailto:spirehomes@longhurst-group.org.uk)

[www.spirehomes.org.uk](http://www.spirehomes.org.uk)

