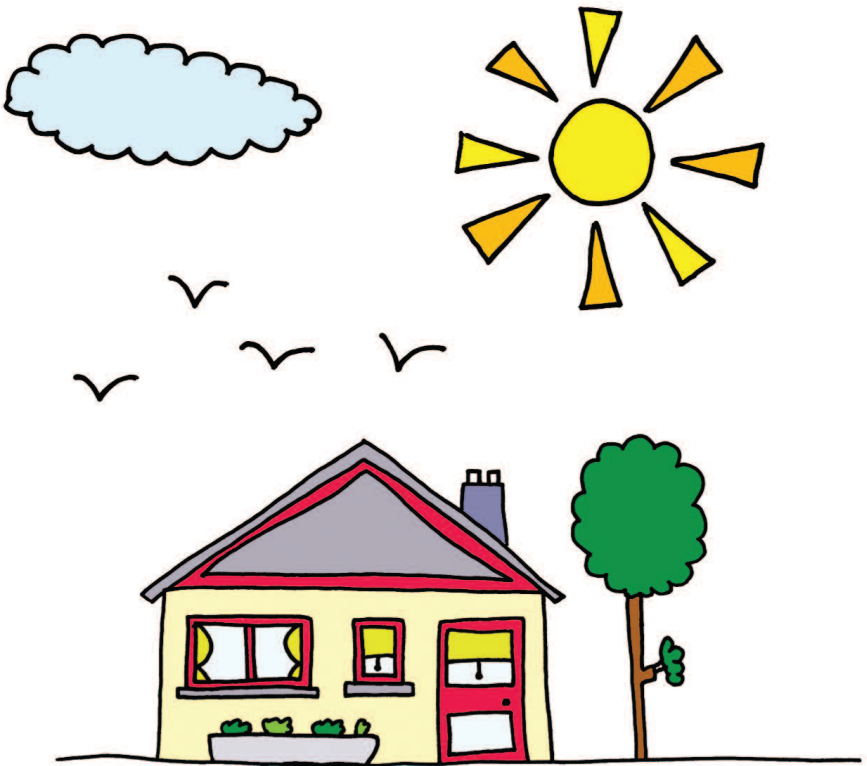


Saving energy, money and the environment



Energy conservation can save you money

This leaflet explains the different ways in which you can save money in your home as well as reduce your impact on climate change.

Essential energy saving tips that will save you money

Kitchen & bathroom

- Use the toaster rather than the grill
- Keep lids on saucepans when cooking
- Chopping food into small pieces cooks it faster
- Choose the right size pan for the cooker ring
- Switch off the cooker a few minutes before you have finished cooking
- Don't put hot food straight into the fridge
- Use a microwave instead of an oven if convenient
- Only fill your kettle with the water you are going to use
- Load / unload fridge / freezer as quick as you can
- Regularly defrost your fridge and freezer
- Try to keep your freezer full to prevent cooling empty space.
- Use the shower instead of the bath (but remember that power showers can use more energy than a bath)
- Use a plug when running hot water
- Put full loads in the washing machine or use the half load setting
- Use the economy setting on the washing machine
- Fill the tumble dryer with a full load and make sure it's vented
- Put washing out to dry on dry days – even in winter, clothes will dry off a lot outside – and smell fresher!
- If you are drying clothes indoors use a clothes horse rather than a radiator
- When using electric appliances take advantage of economy settings where possible
- Economy settings or renewable energy

Insulation measures

- Insulate all hot water pipes to prevent heat loss
- Ensure that cavity walls have insulation installed
- Always have a thick hot water jacket fitted
- Have all external doors and windows draught proofed
- Ensure your loft hatch draught proofed to prevent heat escaping.

Lighting & electrical appliances

- Turn off lights that aren't in use
- Turn off lights in empty rooms
- Keep light shades / bulbs clean for maximum light output
- Use low energy bulbs
- Avoid leaving the TV and other appliances on standby. **Up to 15% of UK domestic energy consumption is from appliances on standby.**

Heating

- Put a jumper or cardigan on in cold weather – don't expect to wear just a T-shirt all year round
- Turn down central heating by 1°C to save 10% on fuel bills. If you don't notice the drop in temperature – turn it down another 1°C
- If you're too hot turn your room thermostat down rather than opening a window
- Set hot water thermostat (on cylinder) to 60°C / 140°F
- Ensure all air vents are left unblocked
- Put foil behind radiators to reflect heat into the room
- Wall to wall carpets reduce heat loss
- Is your heating fully controllable? A central heating programmer increases energy efficiency
- Time your gas central heating to switch off 1 hour before leaving for work
- Time your gas central heating to switch on 30 minutes before returning home

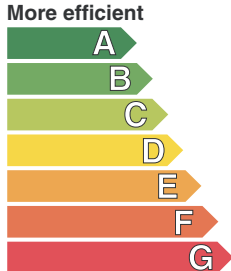

- Make sure the electricity tariff you are on is the right one for your system
- Don't let curtains hang in front of radiators
- Thick curtain linings reduce heat loss
- Close curtains at dusk to retain heat
- Keep internal doors closed to reduce draughts
- To avoid condensation open trickle vents at the top of windows
- Keep radiator thermostats turned down in rooms that are used less – such as bedrooms.

Reduce, re-use, recycle

Producing new things uses energy – as items are often thrown away before they are broken. If you need something new, ask around family and friends to see if anyone is getting rid of something that you could use, or use recycling websites such as www.uk.freecycle.org – and save yourself money.

EU Energy Label

We have all seen the labels on products and lightbulbs which rate them from A to G. By law, retailers, mail-order companies and manufacturers must display these labels on all new domestic fridges, freezers and fridge-freezers, washing machines, electric tumble dryers, combined washer-dryers, dishwashers and light-bulbs for sale. Labels for different products contain different pieces of information. The purpose of these labels is to allow consumers to easily compare appliances. An example label is shown opposite.

	Energy	Washing machine
1) Manufacturer's name and product details	Manufacturer Model	
2) The energy ratings	More efficient 	A
3) Energy consumption and running costs	Less efficient Energy consumption kWh/cycle <small>(based on standard test results for 60°C cotton cycle)</small> <small>Actual energy consumption will depend on how the appliance is used</small>	0.95
4) How well does it perform in other areas?	Washing performance <small>A: higher G: lower</small>	A B C D E F G
	Spin drying performance <small>A: higher G: lower</small>	A B C D E F G
	Spin speed (rpm)	1400
5) Water consumption, capacity and other information	Capacity (cotton) kg	5.0
	Water consumption l	55
	Noise (dB(A) re 1 pW)	Washing 5.2 Spinning 7.0
6) Noise	Further information is continued in product brochures	

1) Manufacturer's name and product details

This simply confirms the manufacturer's name and model number. Check that this is the same as the model you choose.

2) The energy ratings

Most appliances are rated on a scale of A to G, with 'A' being the most efficient and 'G' the least. The only exceptions are refrigeration products. Remember, the more energy efficient an appliance is, the more money you can save - and the more you help the environment. By buying a more efficient model, you're not compromising when it comes to performance either.

3) Energy consumption and running costs

This shows how much electricity is used under standard conditions, measured in kWh / year 'kilowatt hours' for refrigeration appliances or kWh / cycle for washing machines and other appliances. You can work out the average annual running cost - and hence any saving - by multiplying the kWh consumption figure by 7p (the average unit price of electricity). Actual savings will depend on how you use the appliance and how much you pay for electricity.

4) How well does it perform in other areas?

Laundry and dishwashing labels also have ratings for washing, spin and / or drying performance. The A to G indicators here are similar to the main energy efficiency ratings and are based on standard industry tests - the test cycle used is on the label. An A-rating is best. A washing machine that has a good spin-drying performance will save you money and time on tumble drying.

5) Water consumption, capacity and other information

Depending on the product, a range of information is provided here to help you choose the best appliance for your own needs. You might, for example, want to find a washing machine that uses less water (especially if your supply is metered) or a fridge that's quiet to run.

6) Noise

Manufacturers don't have to provide information on noise, but if they do so, you can use this to choose quieter models. A lower number shown here simply means that the appliance emits less noise. All manufacturers print the noise level of their products in their brochures, so check them out if you really need to know.

This leaflet is available in various formats, i.e. different languages, braille, audio formats etc. Please contact us for further information.



=



Lãnguagê Liñè

Rushden Office

1 Crown Court
Crown Way
Rushden
Northamptonshire
NN10 6BS

t: 0845 603 5399

text: 447797 800062

Rutland Office

Pinewood
1 Cold Overton Road
Oakham
Rutland
LE15 6NT

t: 01572 755465

text: 447797 800062

email: spirehomes@longhurst-group.org.uk

www.spirehomes.org.uk

Jargon Buster
Panel
Approved



Spire Homes (LG) Ltd is a registered charity in England and Wales (1140935).